



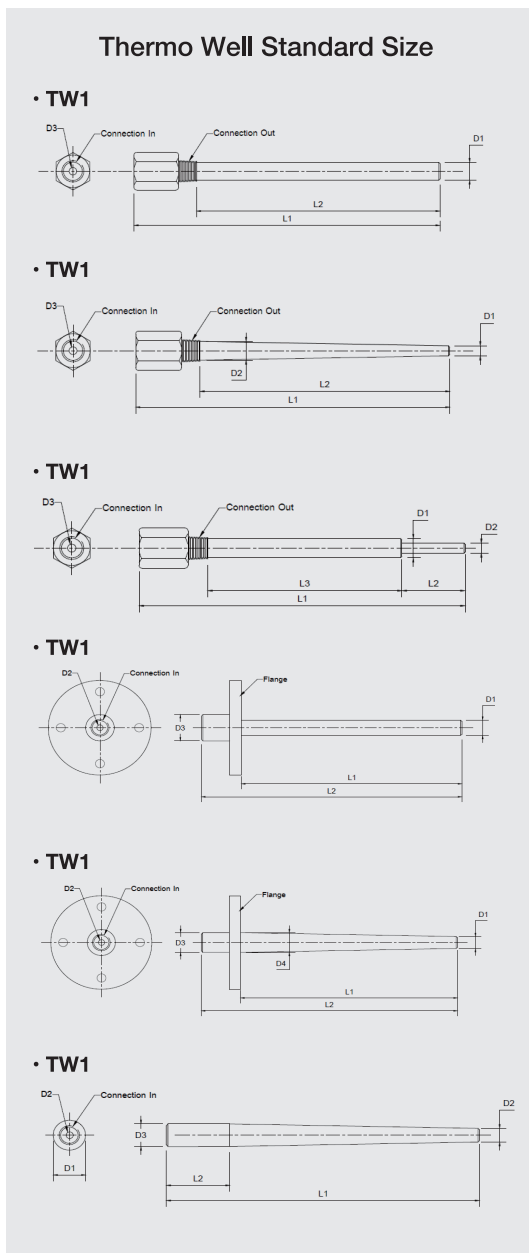
Accessories

Sheath Thermocouple



	Nom. OD. (mm)	Wire Dia. (mm)	Wall Thick. (mm)	Type	Standard Sheath Material
Single Pair 	0.5	0.10	0.08	K, T, J, N	316LSS, 310SS, INCONEL 600
	1.0	0.18	0.13	K, T, J, N	316LSS, 310SS, INCONEL 600
	1.6	0.25	0.18	K, T, J, N	316LSS, 310SS, INCONEL 600
	2.3	0.36	0.25	K, T, J, N	316LSS, 310SS, INCONEL 600
	3.2	0.53	0.36	K, T, J, N	316LSS, 310SS, INCONEL 600
	4.8	0.79	0.53	K, T, J, N	316LSS, 310SS, INCONEL 600
	6.4	1.04	0.74	K, T, J, N	316LSS, 310SS, INCONEL 600
	8.0	1.30	0.91	K, T, J, N	316LSS, 310SS, INCONEL 600
Double Pair 	3.2	0.48	0.36	K, T, J, N	316LSS, 310SS, INCONEL 600
	4.8	0.74	0.53	K, T, J, N	316LSS, 310SS, INCONEL 600
	6.4	0.97	0.74	K, T, J, N	316LSS, 310SS, INCONEL 600
	8.0	1.22	0.97	K, T, J, N	316LSS, 310SS, INCONEL 600

Thermo Well



Flange (JIS Standard)

Withstand Pressure	Sizes		D	C	g	t	f	Dia. of Hold	No. of Hold
	A	B							
5K	10	3/8	75	55	42	9	1	12	4
	15	1/2	80	60	48	9	1	12	4
	20	3/4	85	65	52	10	1	12	4
	25	1	95	75	62	10	1	12	4
	32	5/4	115	90	72	12	2	15	4
	40	3/2	120	95	78	12	2	15	4
10K	50	2	130	105	88	14	2	15	4
	10	3/8	90	65	48	12	1	15	4
	15	1/2	95	70	52	12	1	15	4
	20	3/4	100	75	58	14	1	15	4
	25	1	125	90	70	14	1	19	4
	32	5/4	135	100	80	16	2	19	4
40	3/2	140	105	85	16	2	19	4	
50	2	155	120	100	16	2	19	4	

Other

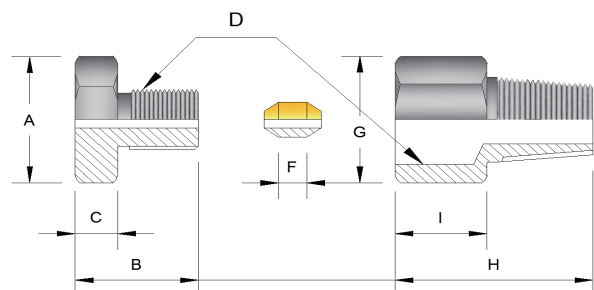


Accessories

Common Accessories & Part

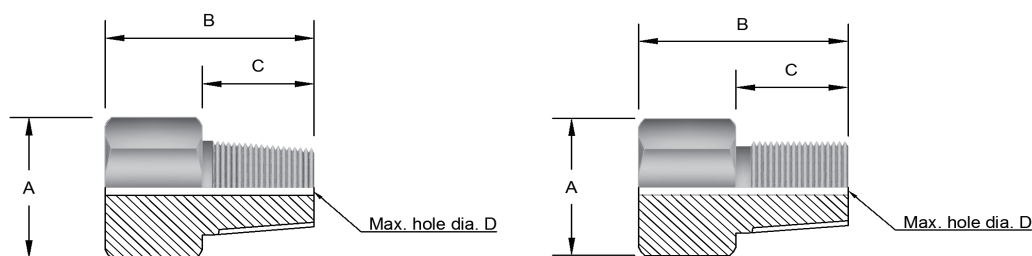
■ Compression Fitting (Push Type)

Configuration	Nominal Sheath O.D. (mm.)	S1	A	B
	1.0	R1/8	10	33
	1.6	R1/8	10	33
	1.6	R1/4	12	35
		R1/8	10	35
	2.3	R1/4	12	35
		R1/8	10	35
	3.2	R1/4	12	35
		R1/8	10	35
	4.8	R1/4	12	35
		R1/8	10	33
	6.4	R1/4	12	35
	8.0	R1/4	12	35



Dimensions Sizes	A	B	C	D	E	F	G	H	I
1/8"	13	14	5	1/8PF	8.0	3	13	21	12
1/4"	17	17	7	1/4PF	11.0	5	17	26	14
3/8"	17	17	7	3/8PF	11.0	5	19	28	15
1/2"	19	23	10	1/2PF	14.0	5	23	32	15
3/4"	26	31	13	3/4PF	18.0	6	29	40	20

■ Fixing Nipples (Tapered : PT. Straight : PF)



Dimensions Sizes	PT				PF			
	A	B	C	D	A	B	C	D
1/8"	13	26	12	6.0	13	26	12	6.4
1/4"	17	29	12	6.5	17	29	12	8.0
3/8"	19	29	14	6.5	21	29	14	12.0
1/2"	23	33	18	6.5	26	33	18	18.0
3/4"	29	40	20	6.5	32	40	20	22.0
1"	38	40	25	8.0	41	40	25	25.0

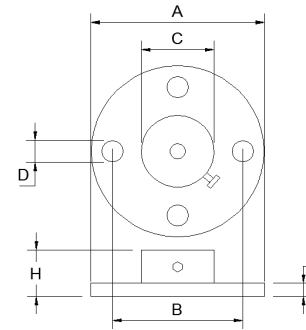


Accessories

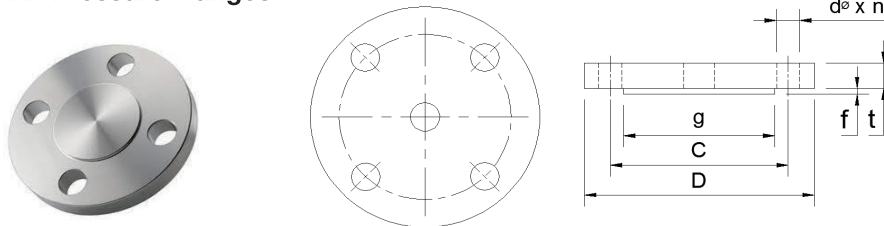
Common Accessories & Part

LOOSE Flange

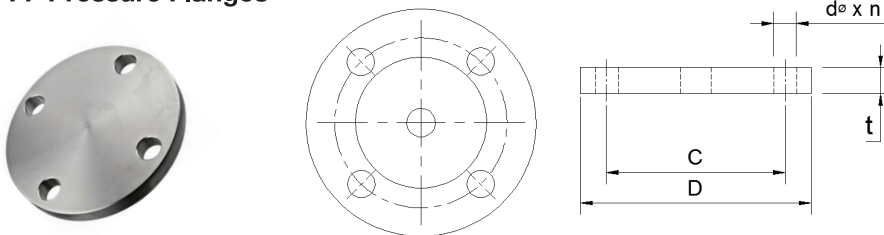
Type	A	B	C	D	t	H
FS Flange (50 OD.)	50	35	18	4.5	3.5	15
FM Flange (85 OD.)	85	65	35	12	10	40
Other						



RF Pressure Flanges



FF Pressure Flanges



Flange (JIS Standard)									
Withstand Pressure	Sizes		D	C	g	t	f	Dia. of Hold	No. of Hold
	A	B							
5K	10	3/8	75	55	42	9	1	12	4
	15	1/2	80	60	48	9	1	12	4
	20	3/4	85	65	52	10	1	12	4
	25	1	95	75	62	10	1	12	4
	32	5/4	115	90	72	12	2	15	4
	40	3/2	120	95	78	12	2	15	4
10K	50	2	130	105	88	14	2	15	4
	10	3/8	90	65	48	12	1	15	4
	15	1/2	95	70	52	12	1	15	4
	20	3/4	100	75	58	14	1	15	4
	25	1	125	90	70	14	1	19	4
	32	5/4	135	100	80	16	2	19	4
20K	40	3/2	140	105	85	16	2	19	4
	50	2	155	120	100	16	2	19	4
	10	3/8	90	65	48	14	1	15	4
	15	1/2	95	70	52	14	1	15	4
	20	3/4	100	75	58	16	1	15	4
	25	1	125	90	70	16	1	19	4
Other	32	5/4	135	100	80	18	2	19	4
	40	3/2	140	105	85	18	2	19	4
	50	2	155	120	100	18	2	19	8



Accessories

Insulation and Protection Tube

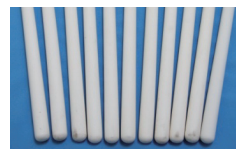
■ Ceramic Insulator for Thermocouple

Model	Code	OD. (mm)	ID. (mm)	Length (mm)	Element Dia. (mm)
Round 1 Bore 		1.0	0.4	100	0.3
		1.2	0.8	100	0.5, 0.65
		2.0	1.0	100	0.5, 0.65
		2.5	1.5	100	1.0
		3.0	2.0	100	0.6
		5.0	3.0	100	2.3
Round 2 Bore 		6.0	4.0	100	3.2
		3.0	0.8	100	0.5, 0.65
		4.0	1.0	100	0.5, 0.65
		6.0	1.5	100	0.65, 1.0
		8.0	2.0	100	0.65, 1.0, 1.6
		10.0	3.0	100	2.3
Round 3 Bore 		12.0	4.0	100	3.2
		4.0	0.9	100	0.5, 0.65
Round 4 Bore 		6.0	1.4	100	0.65, 1.0
		4.0	2.2	50	0.65, 1.0, 1.6
Round 6 Bore 		4.0	3.0	50	2.3
		4.0	4.0	50	3.2
Oval 2 Bore 		4.0	0.9	50	0.5, 0.65
		6.0	1.4	50	0.65, 1.0
		1.0	0.8	80	0.5, 0.65
		1.0	2.0	30	0.65, 1.0, 1.6
		1.0	3.0	34	2.3
		1.0	4.0	34	2.3, 3.2
		1.0	4.0	34	2.3, 3.2
	1.0	4.5	34	2.3, 3.2	



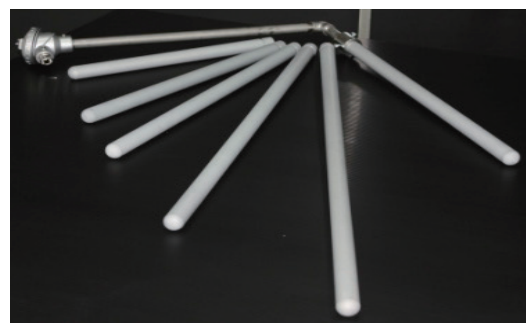
■ Ceramic Insulator for Thermocouple

Type	OD. (mm)	ID. (mm)	Length (mm)				
PT-0 Recrystallized alumina	8	5	300,	500,	600,	800,	1000
	10	6	300,	500,	600,	800,	1000
	13	9	300,	500,	600,	800,	1000
	15	11	500,	600,	800,	1000	
PT-01 Alumina	17	13	500,	600,	800,	1000	
	20	16	500,	600,	800,	1000	
	24	20	500,	600,	800,	1000	
	25	20	500,	600,	800,	1000	
Other							



■ Si3N4

Thermocouple with Si3N4 protection tube Type K
 L: 300, 400, 500, 600, 700, 800, 1000, 1200, 1400 mm.





Accessories

Common Accessories & Part

Terminal Head

Open Type

- TS
- TL

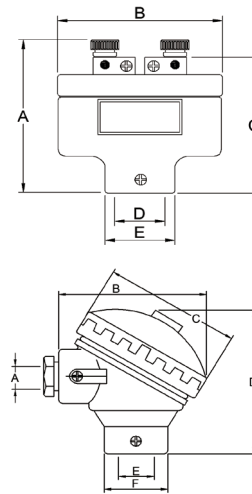
Material : Alloy - Aluminum

Kind	Model	A	B	C	D	E	F
Open	TS	62	43	50	1/4	18	-
	TL	77	70	63	1/2	30	-
Water-Proofed	KG	3/8	56	51	69	M12	25
	KM	1/2	87	76	86	1/2	34

Water - Proofed type

- KG
- KM









Material : Alloy - Aluminum



Other

TH01 Bakelite 	TH02 Alloy - Aluminum 	TH03 Alloy - Aluminum 	TH04 Alloy - Aluminum 	TH05 Stainless Stell 
TH06 Alloy - Aluminum 	TH07 Alloy - Aluminum 	TH08 Alloy - Aluminum 	TH09 Alloy - Aluminum 	

Connector (Terminal Plate)

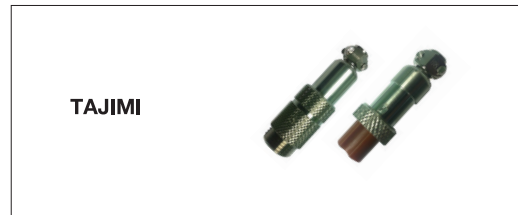
Ceramic  2P-C	 3P-C	 4P-C	 6P-C
Bakelite  2P-B	 3P-B	 4P-B	 6P-B



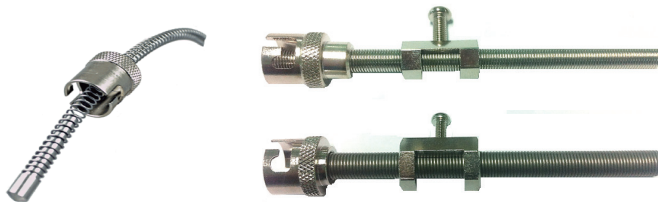
Accessories

Common Accessories & Part

■ Other Connector



■ Bayonets Fittings



■ Connector Terminals

